
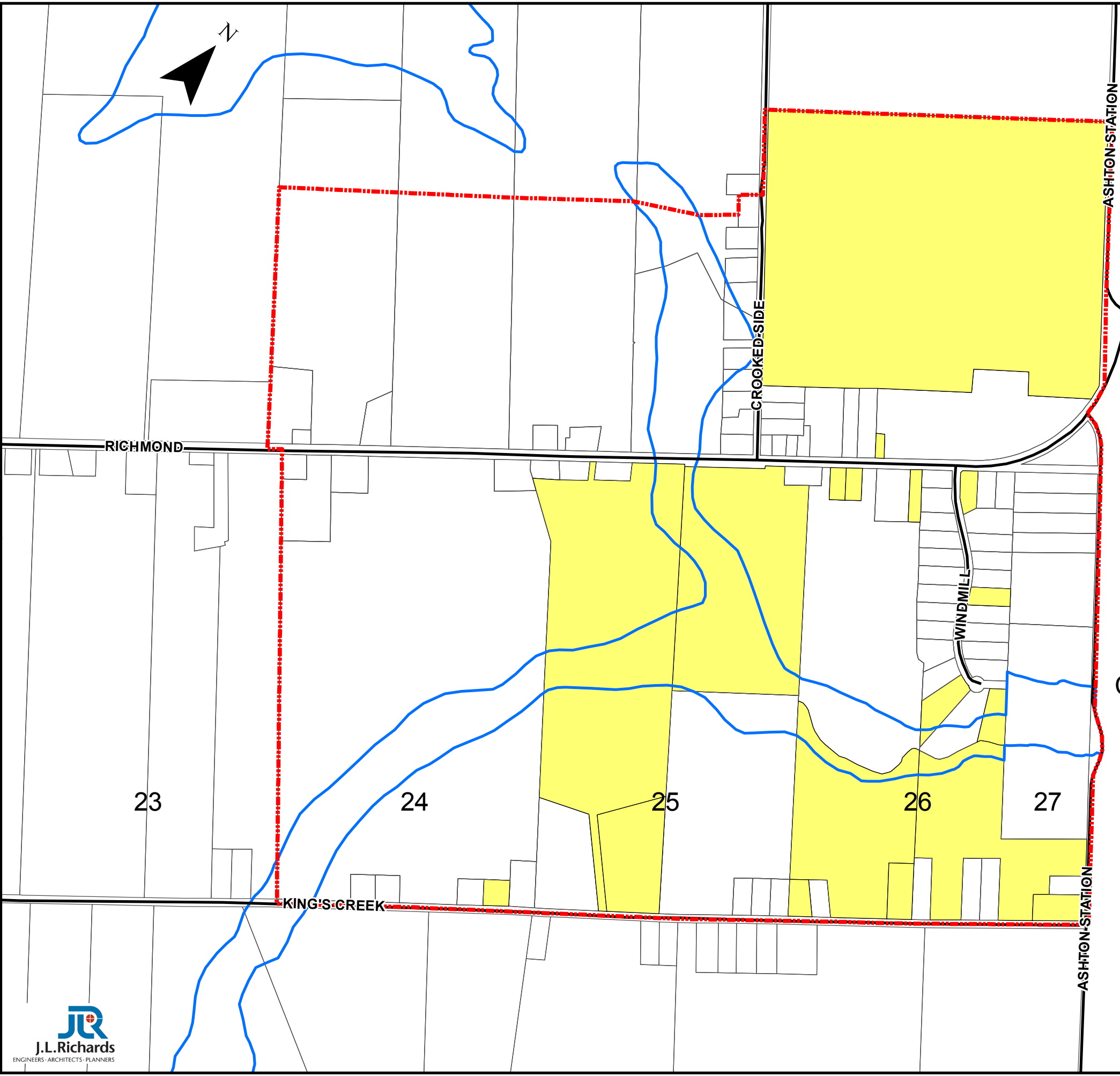


**Legend**

-  Residential Plans Available Registered / Draft Approved / Conceptual Lots:
-  Potential Infill Residential Land (No Planning Applications)
-  Parcel Fabric
-  Community Development Area Boundary
-  Flood Plain



Con IV

Con III

City of Ottawa

Area for Potential Infill: 128.8 hectares  
 Vacant Subdivision Lots: 0 lots  
 Total Potential Lots: 258 lots

**Township of Beckwith Official Plan Review 2008-2009  
 Land Needs Study  
 Figure 5: Prospect Community Development Area  
 Residential Land Inventory**